



CardioGRAFT[®]

Ascending Aorta Conduit (non-valved)

Clinical Overview A human ascending aorta (leaflets excised) for aorta reconstruction

Applications

- Aorta Reconstruction

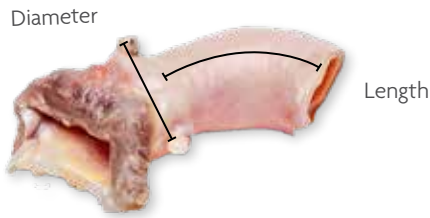
Why Use

- Allograft tissue most closely resembles the patient's native tissue
- Easy to handle and suture
- **Safety:** Allografts offer a high resistance to infection

References

1. Philpott and Zemlin. Aortic reconstruction for an infected stent graft with a composite homograft. *Journal of Thoracic and Cardiovascular Surgery*, 2017; 153, 5: e73-75.
2. Lytle, Petterson, et al. Reoperative cryopreserved root and ascending aorta replacement for acute aortic prosthetic valve endocarditis. *The Annals of Thoracic Surgery*, 2002; 74: 1754-1757.
3. Preventza, Coselli, et al. Homograft use in reoperative aortic root and proximal aortic surgery for endocarditis: A 12-year experience in high-risk patients. *Journal of Thoracic and Cardiovascular Surgery*, 2014; 148: 989-994.





Ascending Aorta Conduit (non-valved)

Storage: -120°C and below (Cryopreserved)

Description	Diameter	Order Code
Small	less than or equal to 16 mm	AAS
Medium	17 to 21 mm	AAM
Large	greater than or equal to 22 mm	AAL

68-60-153.00

The LifeNet Health logo is a registered trademark of LifeNet Health.
 CardioGraft is a registered trademark of LifeNet Health.
 ©2017 LifeNet Health, Virginia Beach, VA. All rights reserved.



North America
 1.888.847.7831
orders@lifenethealth.org

Europe
 + 43 1 375002710
eu_orders@lifenethealth.eu

Latin America □ Asia □ Middle East
 1.757.464.4761 ext. 2000
internat.orders@lifenethealth.org

www.LifeNetHealth.org
www.LifeNetHealth.eu