

CardioGRAFT[®]

by  LifeNet Health[®]
Saving Lives. Restoring Health. Giving Hope.

Cryopreserved Bio-Implants for Cardiac Procedures

Thaw & Dilution Instructions

Cardiac Bio-Implant Thaw & Dilution Instructions

Required Sterile Supplies:

- Two (2) major basins (5 liter capacity or greater)
- Clamp
- Scissors
- 1 liter room temperature D5LR Sterile Solution (Lactated Ringers w / 5% Dextrose)
- 2 liters warm 0.9% normal saline minimum (additional warm and room temperature saline may be required to maintain thawing temperature of 37°C to 42°C).
- Thermometer

1



Step 1

Non-Sterile Team Member:

Using insulated gloves, retrieve/open the boxed graft and inspect the pouch to ensure its integrity.

Do not use the graft if the packaging is damaged.

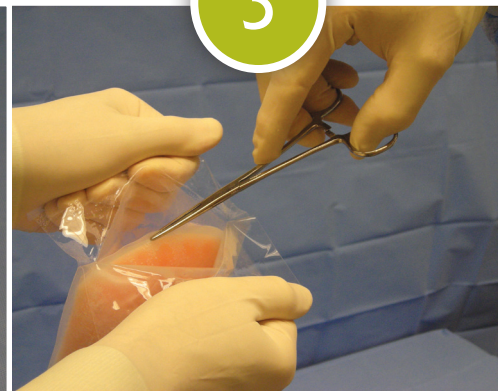
2



Step 2

Replace the graft in the box, leave the lid open. **Keep at room temperature for 7 minutes.**

3



Step 3

Remove graft from box, open outer peel pack and present to **Sterile Team Member.**

4



Step 4

Sterile Team Member:

Double glove and grasp inner pouch by sealed edge with a clamp and remove from outer peel pack.

5



Step 5

Lower inner pouch into 5 liter basin containing minimum of 2 liters warmed (37–42°C) sterile saline solution.

6



Step 6

Gently agitate pouch periodically 5-7 minutes until ice is melted.

7



Step 7

When graft is thawed, dry outside of pouch and open with scissors.

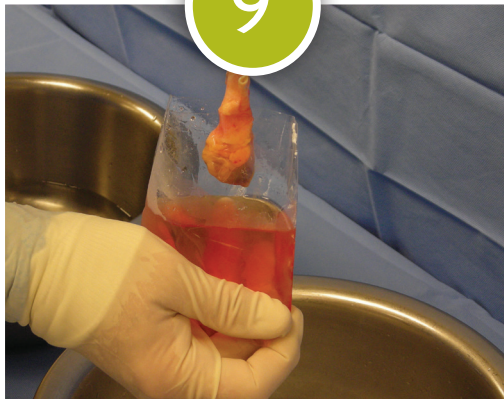
8



Step 8

Non-Sterile Team Member:
Pour 1 liter room temperature D5LR into second large sterile basin.

9



Step 9

Sterile Team Member:
Remove graft with smooth forceps and place into basin of D5LR.

10



Step 10

Discard outer gloves. **Allow graft to passively rinse for minimum of 5 minutes.** Graft is ready for implantation.

NOTES:

- Use aseptic technique at all times; prepare each allograft separately.
- Use sterile thermometer or sterile warmer to maintain a temperature of 37–42°C throughout the thawing process.
- **If implantation is delayed, cover basin with sterile towel and place basin in larger basin of sterile slush.**



Cardiac

Valves | **CardioGRAFT®**



Pulmonary Valve



Aortic Valve

Conduits | **CardioGRAFT®**



Ascending Aorta
(Excised leaflets)



Thoracic Aorta



Pulmonary Artery
(Excised leaflets)

Repair Grafts | **CardioGRAFT®**



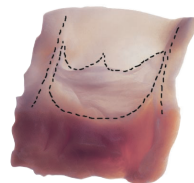
Pulmonary Patch
(Thick/Thin)



Hemi Pulmonary
Artery (Right/Left)



Mono Cusp Patch
(Right/Left)



Mono Cusp Patch