



CardioGRAFT[®]

Hemi Pulmonary Artery (right or left)

Clinical Overview

Cryopreserved human pulmonary artery used for cardiac repair and reconstruction

Applications

Tetralogy of Fallot, Pulmonary Atresia, Outflow Tract/Root Reconstruction, Truncus Arteriosus, Transposition of Great Vessels, Hypoplastic Left Heart Syndrome, Pulmonary Stenosis/Atresia

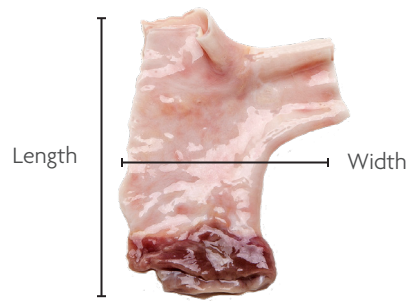
Why Use

- Natural ability to resist infection^{1,2,3}
- Alleviates the need for anticoagulation therapy⁴
- Reduced thrombosis potential³
- Human tissue – Closely resembles autograft; compliant and flexible
- Forgiving and compliant to the native tissue. Easy to handle and suture, saving time.

References

1. Kirklin et al. Aortic Valve Endocarditis with Aortic Root Abscess Cavity: Surgical Treatment with Aortic Valve Homograft. Ann Thorac Surg 45:674-677, June 1988
2. Tuna et al. Results of Homograft Aortic Valve Replacement for Active Endocarditis. Ann Thorac Surg 1990; 49: 619-24
3. Hopkins et al. Cardiac Reconstructions with Allograft Tissues. Springer 2005
4. Pettersson, Coselli, et al. 2016 The American Association for Thoracic Surgery (AATS) consensus guidelines: Surgical treatment of infective endocarditis. Journal of Thoracic and Cardiovascular Surgery, 2017; 153: 1241-1258





Hemi Pulmonary Artery (right or left)

Cryopreserved Storage (-120°C or below)/5 year shelf life

Description	Size	Order Code
Right (no leaflet)	Varies by donor. Multiple options.	RHPA
Left (no leaflet)	Varies by donor. Multiple options.	LHPA

68-60-156.00

LifeNet Health, the LifeNet Health logo, and CardioGraft are registered trademarks of LifeNet Health.
©2019 LifeNet Health, Virginia Beach, VA. All rights reserved.



North America
1.888.847.7831
orders@lifenethealth.org

Europe
+ 43 1 375002710
eu_orders@lifenethealth.eu

Latin America □ **Asia** □ **Middle East**
1.757.464.4761 ext. 2000
internat.orders@lifenethealth.org

LifeNetHealth.org
LifeNetHealth.eu